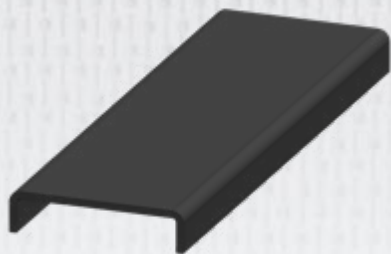


SuperLoc® Caps and Connectors

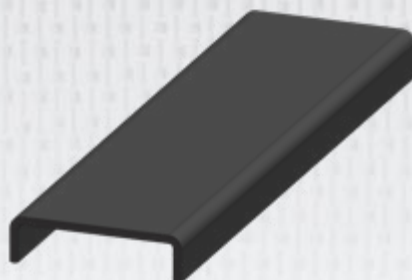
Technical Data Sheet

Wale & Retaining Wall System (US Patent #6,893,191 B2/May 17, 2005)

TOP CAPS



Fits Series 1610 (CH995)



Fits Series 1580 (CH980)



Fits Series 1560 (SS051)

CONNECTORS

45°/90°



Fits Series 1610 (SS821)

45°/90°/180°
Made of PVC



Fits Series 1580 (PVC001)

45°/90°



Fits Series 1560 (SS804 /SS809)

90°/180°

45°/90°/180°



Fits Series 1432 (SS141)

Note: Consult a professional engineer when concerns of wave loads are involved.

Creative Pultrusions, Inc. reserves the right to edit and modify literature, please consult the web site for the most current version of this document.



214 Industrial Lane, Alum Bank, PA 15521
814.839.4186 • Fax 814.839.4276 • Toll Free 888.CPI.PULL
www.creativepultrusions.com

CPM079-0604.1C
DLR: 06.15.18