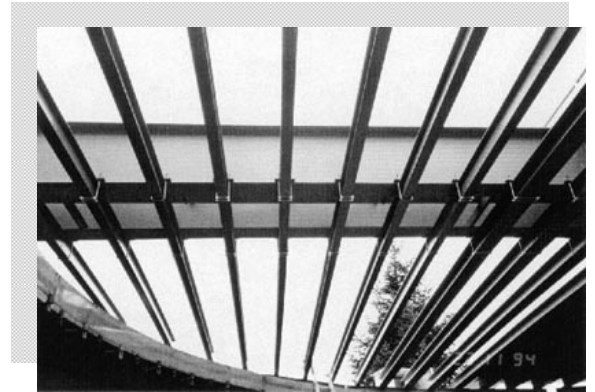
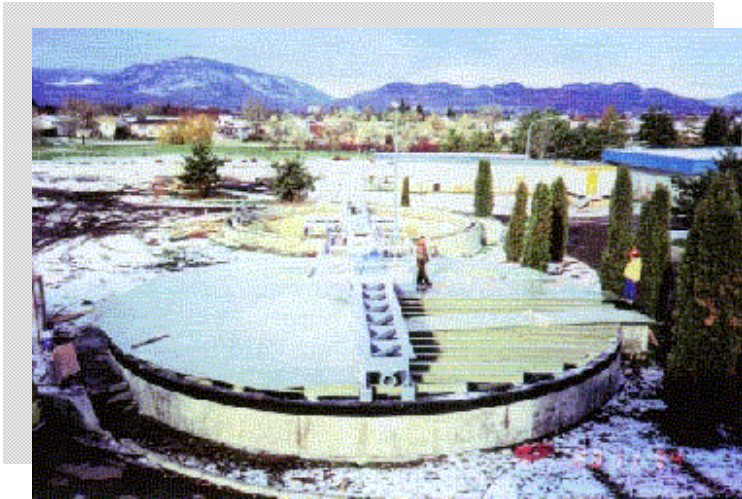


Shaping the Future

with Real Corrosion-Resistant Solutions Working for You

Wastewater Industry

**Project—Wastewater Treatment Plant;
Water Clarifier Tank Covers**
Location—Kelowna, British Columbia, Canada



Pultex® FRP structurals allowed Precision Fibre Structures take advantage of pultrusions due to the lightweight and non-corrosive features. It was installed in sub-zero temperatures where the use of pultrusions were quick and easy to work with compared to

conventional materials on an existing concrete fermentation tank. For the construction of this cover, which must withstand the heavy snowloads of the region, up to 52 ft. long pultruded beams and 25 ft. long flat sheet panels were utilized. Unlike conventional materials, installation was completed without the need for extensive manpower or costly equipment.

Structural Integrity Features/ Benefits

- Lightweight ...Reduced Assembly Time
- High Strength...Structural Design Capabilities
- Corrosion Resistance...Minimum Maintenance Cost

Technical Profile

Wastewater Treatment Plant – Tank Covers

Resin Series: 1500 Series

Pultex® FRP Structurals : Flat Sheets, I-Beams and Wide Flange Beams

**Distributor/Fabricator: Precision Fibre Structures, Inc.,
Surrey, British Columbia, Canada**



CREATIVE PULTRUSIONS, INC.

Corporate Headquarters
214 Industrial Lane
Alum Bank, PA 15521 USA
Phone: 814 839-4186
Toll-Free: 1-888-CPI-PULL (274-7855)
Fax: 814-839-4276
E-mail: crpul@pultrude.com

Web site: www.creativepultrusions.com