

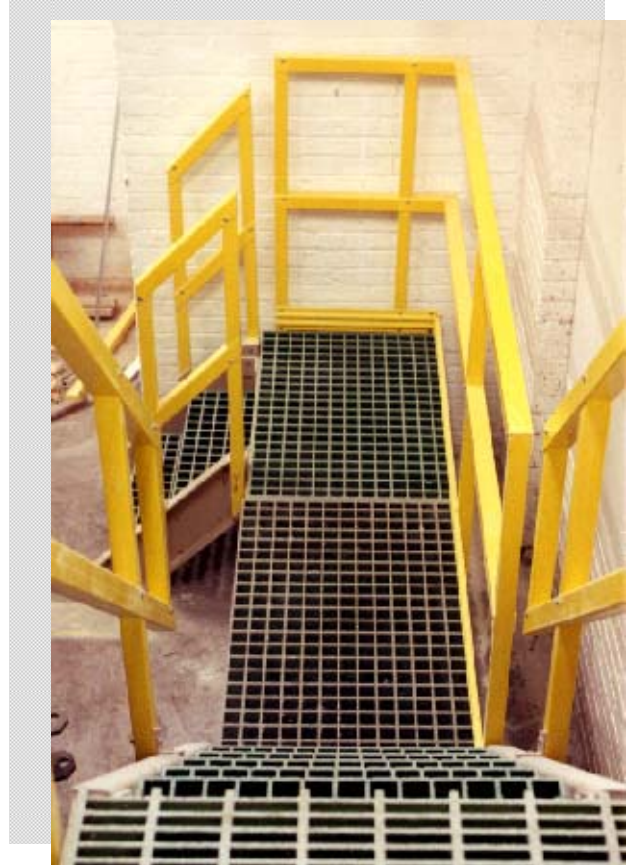
Shaping the Future

with Real Corrosion-Resistant Solutions Working for You

Chemical Processing Industry

Project—Bleach Manufacturing Plant;
Access Structure
Location—Chicago, Illinois

Products are fiber reinforced, polymer composite structural profiles and Supergrate™ Molded Grating installed in a bleach manufacturing plant which produces a highly corrosive environment. Bleach is mixed with other chemicals to produce cleaners. The mixing process causes continuous splashing from the top of the tanks. After more than seven years of service in this environment, the access structures remain in perfect condition.



Structural Integrity Features/Benefits

- Corrosion Resistance...Increased Service Life/
Cosmetically Attractive
- Lightweight...Reduce Installation Expense
- High Strength...Structural Design Capabilities

Technical Profile

Access Structure

Resin Series: 1625 Series

Pultex® FRP Structurals: Square Tubes, Channels, Angles, and Supergrate™ Molded Grating

Distributor/Fabricator: Ultra, Inc.,
Milwaukee, Wisconsin



CREATIVE PULTRUSIONS, INC.

Corporate Headquarters
214 Industrial Lane
Alum Bank, PA 15521 USA
Phone: 814 839-4186
Toll-Free: 1-888-CPI-PULL (274-7855)
Fax: 814-839-4276
E-mail: cpul@pultrude.com

Web site: www.creativepultrusions.com

CPS030CP-0400.5C