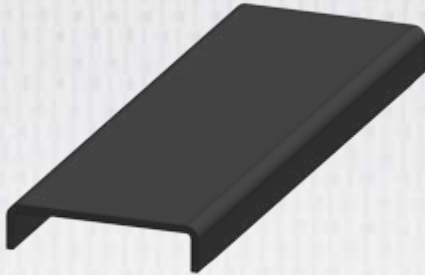


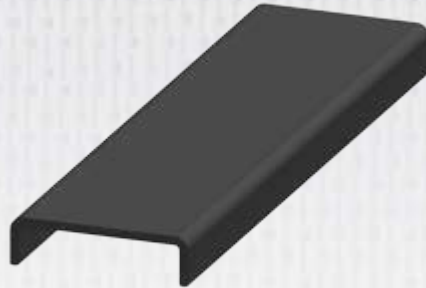
SuperLoc® Caps and Connectors Technical Data Sheet

Wale & Retaining Wall System (US Patent #6,893,191 B2/May 17, 2005)

CONNECTORS



Series 1610 (CH995)



Series 1580 (CH980)



Series 1560 (SS051)

TOP CAPS

45°/90°



Series 1610 (SS821)

45°/90°/180°
Made of PVC



Series 1580 (PVC001)

90°/180°



Series 1560 (SS804)

45°/90°

Note: Consult a Professional Engineer when concerns of wave loads are involved.

FOR MORE DETAILS ON THE SUPERLOC® SHEET PILE SYSTEM AND SUPERWALE™ CONTACT:

Andrew Swindell, Outside Sales Representative Waterfront Products

Toll-free: 888.CPI-PULL / Phone: 814.839.4186 Ext. 243 / Email: aswindell@pultrude.com

Creative Pultrusions, Inc. reserves the right to edit and modify literature, please consult the web site for the most current version of this document.



214 Industrial Lane, Alum Bank, PA 15521
814.839.4186 • Fax 814.839.4276 • Toll Free 888.CPI.PULL
www.creativepultrusions.com

CPM079-0604.1C
DLR: 02.18.15